

DESCRIPTION

AMC MODEL SWSH-810-2DR-IND-SMC IS A 8.2 TO 10.0 GHz REFLECTIVE SINGLE POLE TWO THROW SWITCH WITH LOW INSERTION LOSS IN A COMPACT PACKAGE.

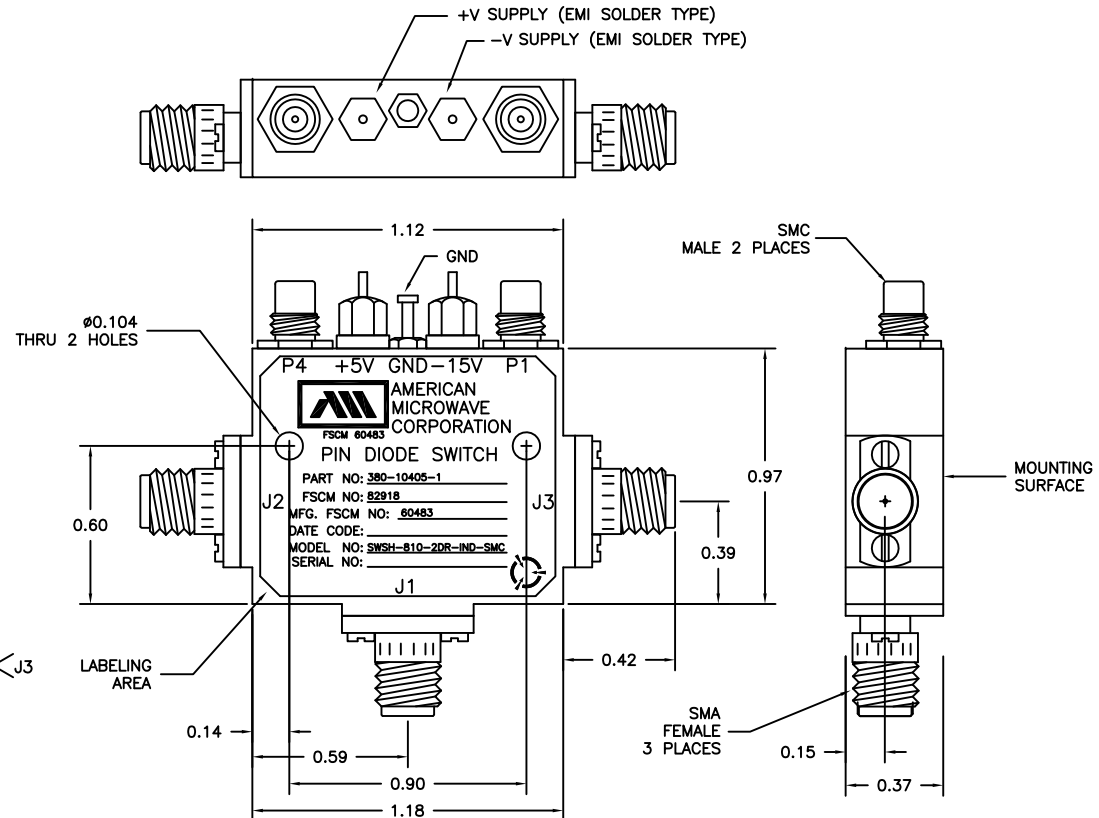
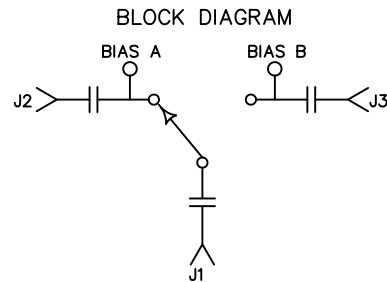
REVISIONS				
ZONE	REV.	DESCRIPTION	DATE	APPROVED
	-	ORIGINAL RELEASE JOB# 108140E	09/06/02	
	A	SEE ECN# 05-014	5/10/05	

SPECIFICATIONS

- FREQUENCY RANGE: 8.2 TO 10.0 GHz
- RF POWER AT (+30°C): 1 WATT PEAK
- IMPEDANCE: 50 OHMS
- VSWR: 2.0:1 MAXIMUM
- ISOLATION: 55 dB MINIMUM
- INSERTION LOSS: 1.5 dB MAXIMUM
- SWITCHING SPEED: 2 uSed MAXIMUM PLUS TRIGGER DELAY
- POWER: 1.7 WATT MAXIMUM
- TTL LOGIC LOW: -0.3 VOLTS TO +0.7 VOLTS
- TTL LOGIC HIGH: +2.5 VOLTS TO +5.0 VOLTS
- BIAS AND SUPPLY VOLTAGE: ... +5.0V ± 0.5 VDC
-15.0V ± 0.5 VDC

LOGIC TABLE

TTL STATE		INSERTION LOSS (Z)	
P ₄	P ₁	J ₁ -J ₂	J ₁ -J ₃
0	0	LOW	LOW
0	1	LOW	ISOLATED
1	0	ISOLATED	LOW
1	1	ISOLATED	ISOLATED



ENVIRONMENTAL RATINGS:

- TEMPERATURE: -55°C TO +110°C (OPERATING)
- HUMIDITY: MIL-STD-202, METHOD 106
- THERMAL SHOCK: MIL-STD-202F, METHOD 107 D COND. A
- SHOCK: MIL-STD-202F, METHOD 213B COND. B
- VIBRATION: MIL-STD-202F, METHOD 204D COND. B
- ALTITUDE: MIL-S-3928
- TEMPERATURE CYCLE: MIL-STD-202F, METHOD 107D COND. A

NOTE: SPECIFICATIONS WILL VARY OVER OPERATING TEMPERATURE
NOTE: THE ABOVE SPECIFICATIONS ARE SUBJECT TO CHANGE OR REVISION

ALL DIMENSIONS ARE IN INCHES
TOLERANCES:
X.XX ±0.01
X.XXX ±0.005

AMERICAN MICROWAVE CORPORATION

7311-G GROVE ROAD
FREDERICK, MARYLAND 21704 USA
TEL: 301-662-4700 FAX: 301-662-4938
WEBSITE: www.americamicrowavecorp.com
E-MAIL: sales@americamicrowavecorp.com
ISO 9001:2000 CERTIFIED



APPROVALS		DATE	TITLE			
DRAWN <i>JDJ</i>		3/6/02	PRODUCT FEATURE SWSH-810-2DR-IND-SMC 380-10405-1			
MODIFIED <i>JDJ</i>		5/10/05	SIZE	FSCM NO.	DWG NO.	REV.
ISSUED			A	60483	100-6276	A
			SCALE	N:S		SHEET
					1 OF 3	